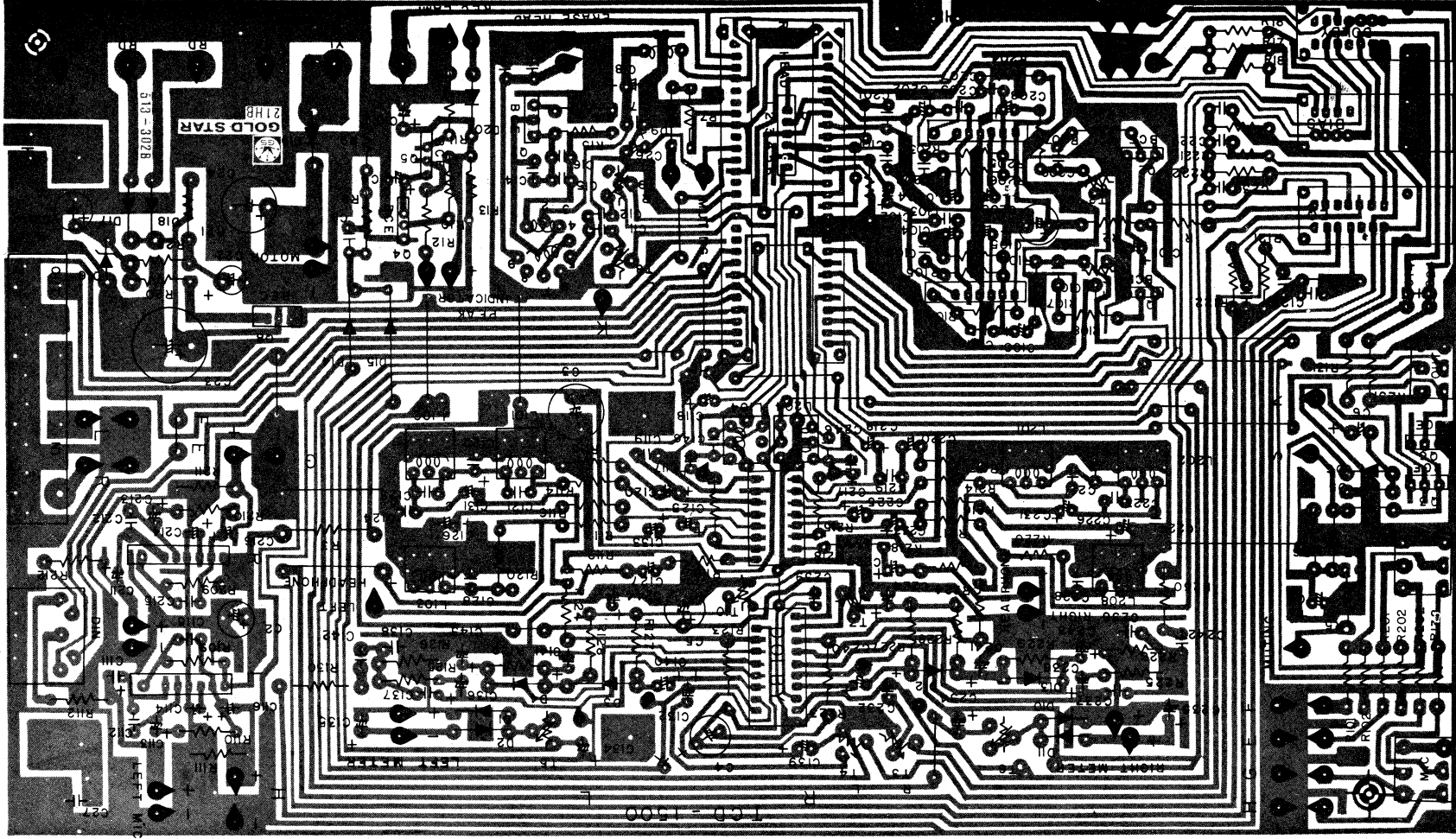
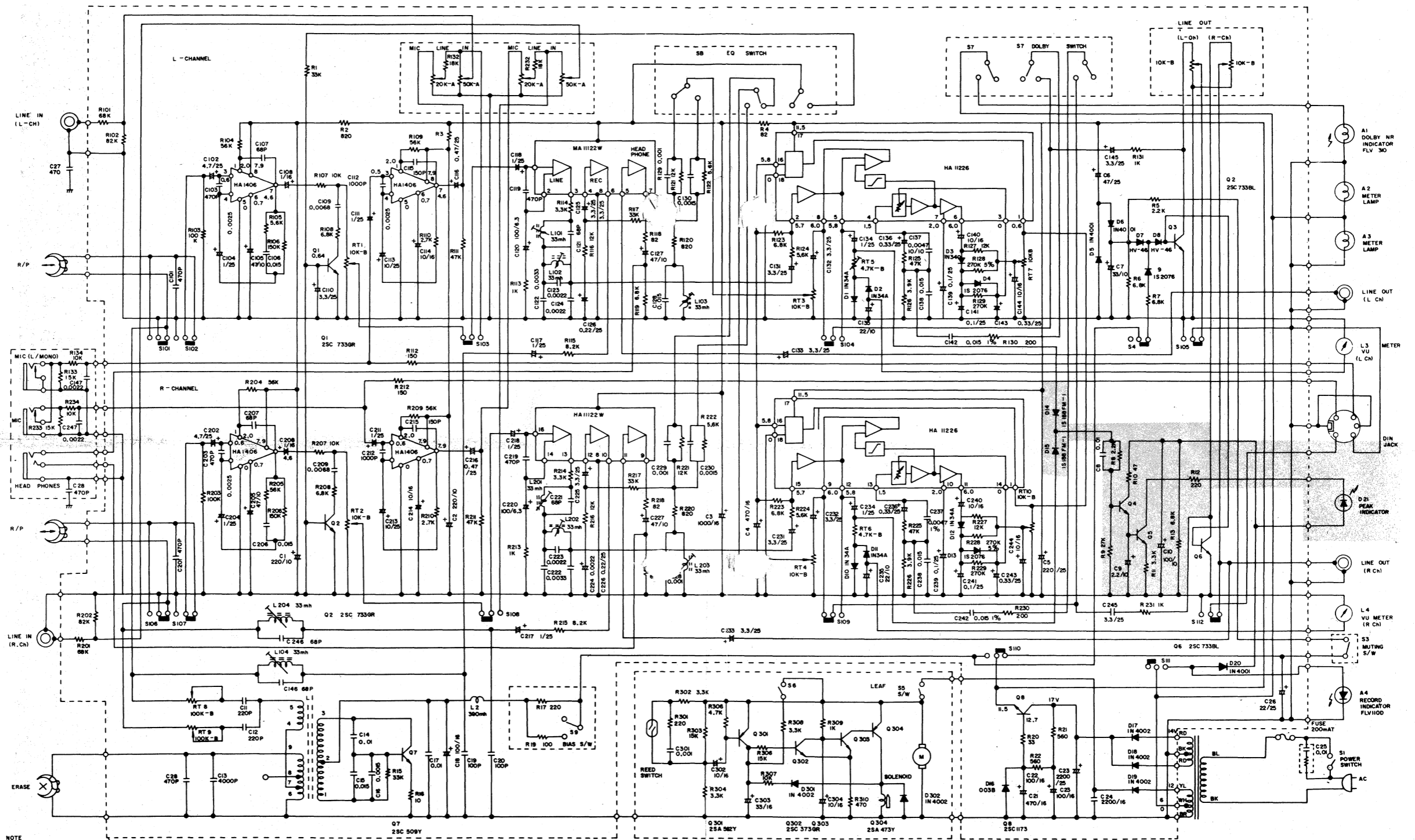


COMPONENTS VIEW



# SCHEMATIC DIAGRAM



NOTE  
 1. ALL RESISTANCE VALUES ARE IN OHMS (Ω), K=1000  
 2. ALL CAPACITANCE VALUES ARE IN MICROFARDS (MF) EXCEPT "P" NOTED (P=μF + PF)  
 3. VOLTAGE MEASURED WITH VOLTMETER AT 220V AC LINE.  
 LEVEL CONTROL AT MINIMUM AND NO SIGNAL.

REF NO	SWITCH	POSITION
S101-S102	RECORD / PLAY BACK	PLAY BACK
S1	POWER	OFF
S3, S4	MUTING	OFF
S5	MOTOR	OFF
S6	PAUSE	OFF
S7	DOLBY N.R	OFF
S8	EQ	NORM
S9	BIAS	LOW

Portion identified by shaded area is only used for Model TCD-1500